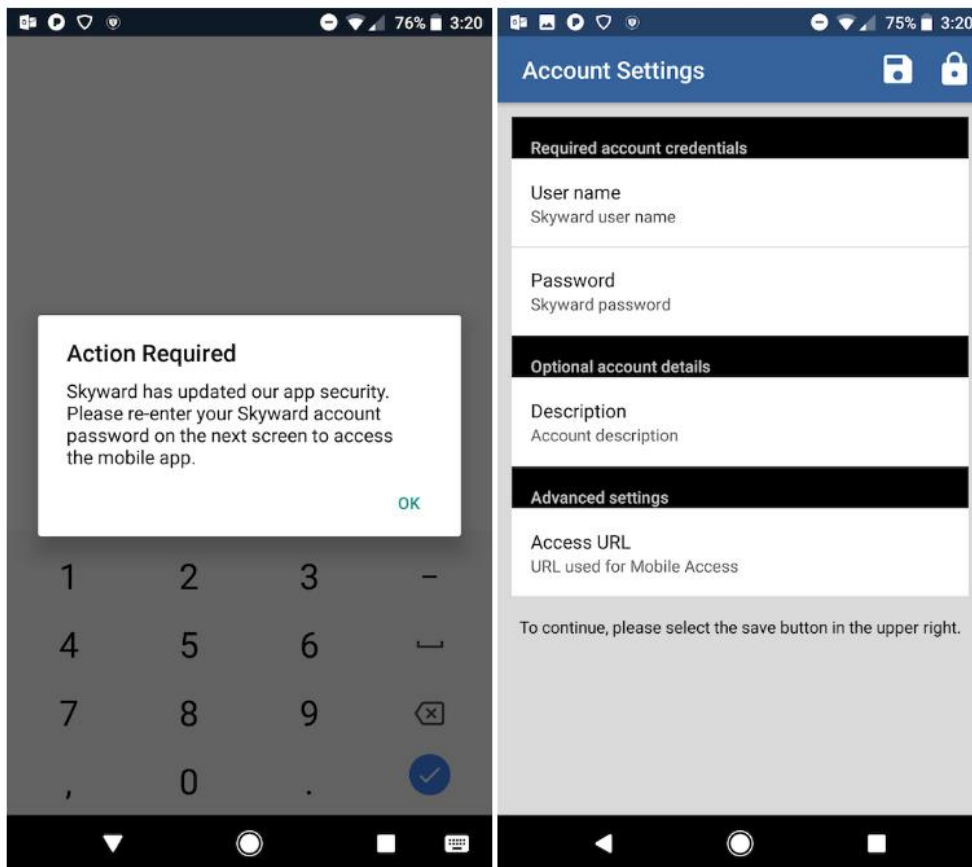


Skyward Announcement: Skyward Mobile - Android users must re-enter password – December 8, 2017

Skyward Mobile Users,

Android users -- After updating to the newest version of the Skyward Mobile Access app from the Google Play Store, you will be asked to re-enter your Skyward account password when signing into the app with your passcode. This requirement is due to improvements we have made for storing account passwords within the app.



Thank you,

Skyward Support

